



FAIRFAX

Noble Series

2,324 sq. ft. +/-



ELEV. A



ELEV. C



ELEV. D

3 - 4 Bedrooms

2.5 Baths

1st Floor - 1,044 sq. ft. +/-

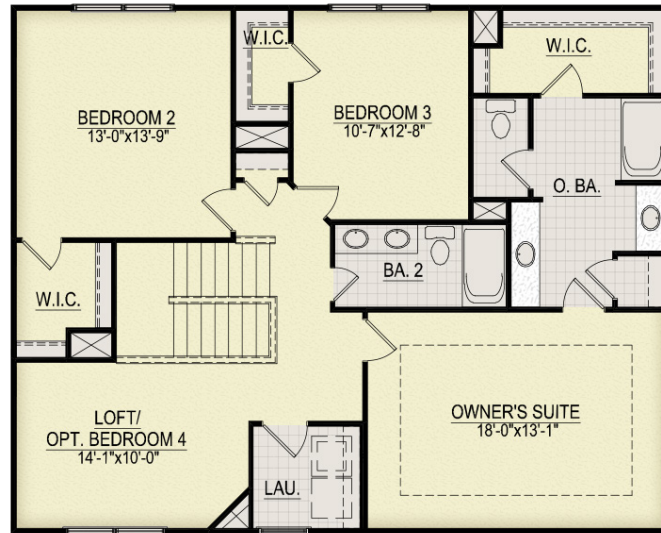
2nd Floor - 1,280 sq. ft. +/-

Total Sq. Ft. - 2,324 +/-

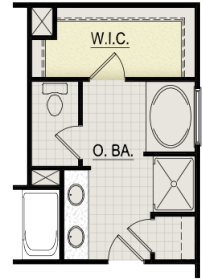
FAIRFAX

Noble Series

2,324 sq. ft. +/-



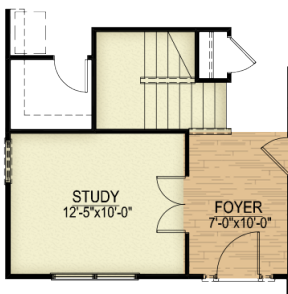
Second Floor



Opt. Owner's Bath



Opt. Bedroom 4



Opt. Study



First Floor

Opt.
Triple Windows

3 - 4 Bedrooms

2.5 Baths

1st Floor - 1,044 sq. ft. +/-

2nd Floor - 1,280 sq. ft. +/-

Total Sq. Ft. - 2,324 +/-

In the interest of continuous improvement and to meet ever changing market conditions, the Builder reserves the right to modify the plans, specifications and products without notice obligation. All dimensions and/or square footage representations are approximate and subject to change without notice obligation. This is the artist's conception with optional shutters, gutters, brick work, stone and landscaping shown and should not be relied on as actual elevations and floor plans. Refer to Builder specifications for your particular community. 060625

